

Content

Description.....	1
Subscribing to Trading Central feed.....	1
Installation process.....	2
Features and parameters.....	5
Upgrade process.....	7

Description

TC.TechnicalAnalysis is an easy to install multilingual customizable Indicator designed to help traders make profitable decisions 24/5! **TC.TechnicalAnalysis** is a unique Indicator which allows your customers to see Trading Central's levels and strategies directly on live charts. Actionable content, user friendly interface, customizable timeframes, the **TC.TechnicalAnalysis** Indicator also allows users to fill in orders and program trades based on Trading Central levels!



Subscribing to the Trading Central live feed

The Trading Central Indicator automatically delivers live data to licensed broker. If the Indicator does not work on your MT4 your broker is probably not licensed by Trading Central. In this case please contact your broker and request a license.

License: Orbex Limited (HE 258884) is a fully licensed and regulated Cyprus Investment Firm (CIF) governed and supervised by Cyprus Securities and Exchange Commission (CySEC) (License Number 124/10).

Risk Warning: Trading foreign exchange on margin carries a high level of risk and may not be suitable for all investors. Before deciding to trade foreign exchange, you should carefully consider your investment objectives, level of experience, and risk appetite. There is a possibility that you may sustain a loss of some or all of your investment and therefore you should not invest money that you cannot afford to lose. You should be aware of all the risks associated with foreign exchange trading and seek advice from an independent financial advisor if you have any doubts.

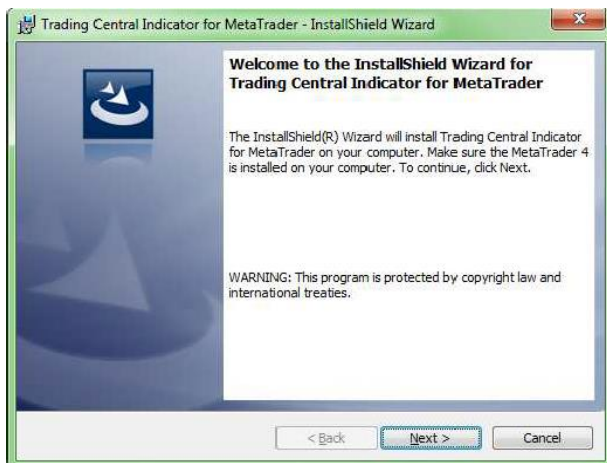
CFDs are complex instruments and come with a high risk of losing money rapidly due to leverage. 60.00% of retail investor accounts lose money when trading CFDs with Orbex Ltd. You should consider whether you understand how CFDs work and whether you can afford to take the high risk of losing your money.

Installation process

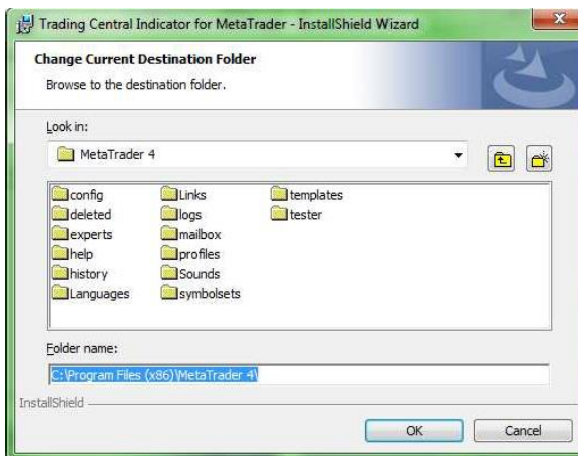
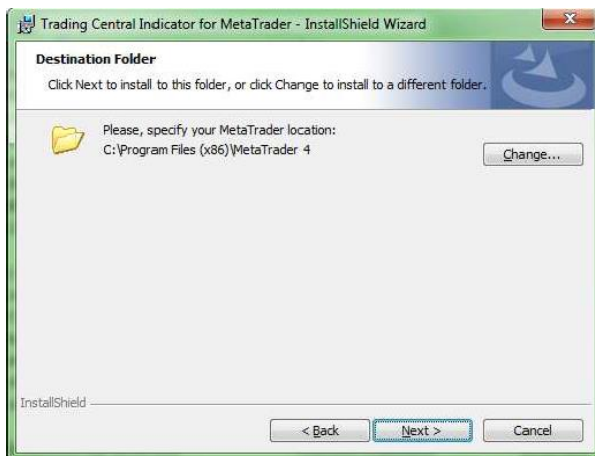
The latest version of our Indicator can be downloaded from

http://www.tradingcentral.com/Install_Trading_Central_Indicator_for_MetaTrader/setup.exe

You need just follow some simple steps proposed by the installer:



Indicate the proper path to the MetaTrader folder you use. Attention! If you have several MetaTrader platforms installed, you need choose the platform corresponding to the broker, who provided you with the TC.TechnicalAnalysis Indicator



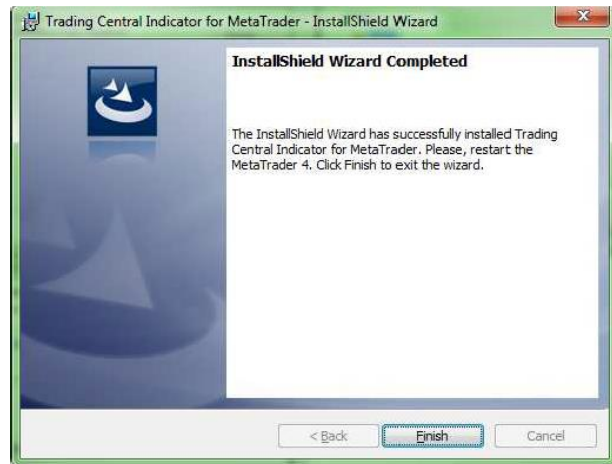
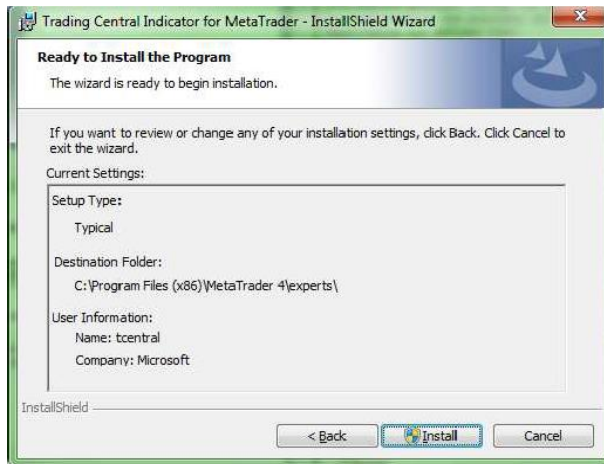
License: Orbex Limited (HE 258884) is a fully licensed and regulated Cyprus Investment Firm (CIF) governed and supervised by Cyprus Securities and Exchange Commission (CySEC) (License Number 124/10).

Risk Warning: Trading foreign exchange on margin carries a high level of risk and may not be suitable for all investors. Before deciding to trade foreign exchange, you should carefully consider your investment objectives, level of experience, and risk appetite. There is a possibility that you may sustain a loss of some or all of your investment and therefore you should not invest money that you cannot afford to lose. You should be aware of all the risks associated with foreign exchange trading and seek advice from an independent financial advisor if you have any doubts.

CFDs are complex instruments and come with a high risk of losing money rapidly due to leverage. 60.00% of retail investor accounts lose money when trading CFDs with Orbex Ltd. You should consider whether you understand how CFDs work and whether you can afford to take the high risk of losing your money.

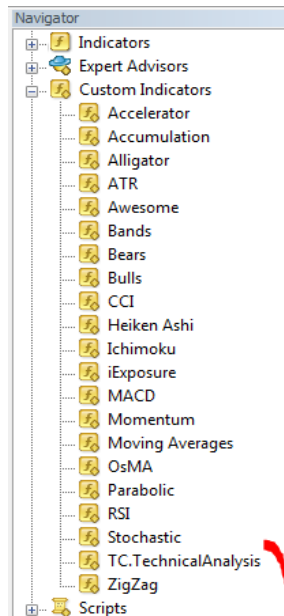
Trading Central Indicator for MetaTrader4

TRADER / USER SET UP & CONFIGURATION



Now restart your MetaTrader.

Go to Navigator Custom Indicators and look for TC.TechnicalAnalysis:

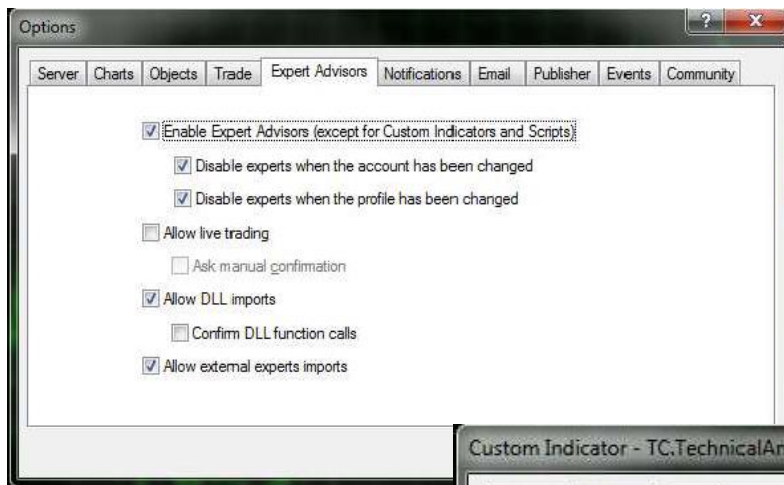
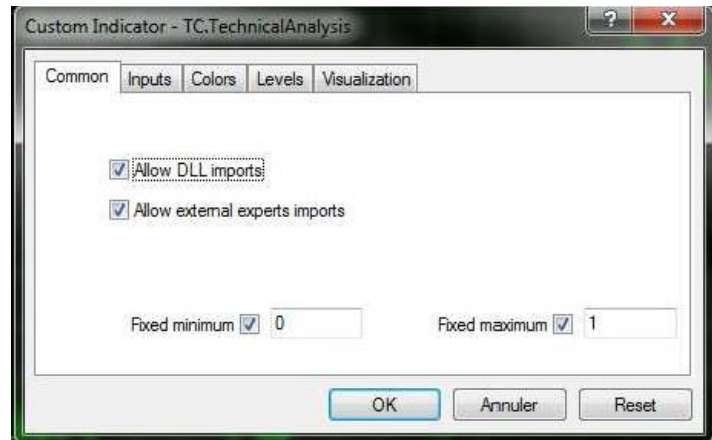


License: Orbex Limited (HE 258884) is a fully licensed and regulated Cyprus Investment Firm (CIF) governed and supervised by Cyprus Securities and Exchange Commission (CySEC) (License Number 124/10).

Risk Warning: Trading foreign exchange on margin carries a high level of risk and may not be suitable for all investors. Before deciding to trade foreign exchange, you should carefully consider your investment objectives, level of experience, and risk appetite. There is a possibility that you may sustain a loss of some or all of your investment and therefore you should not invest money that you cannot afford to lose. You should be aware of all the risks associated with foreign exchange trading and seek advice from an independent financial advisor if you have any doubts.

CFDs are complex instruments and come with a high risk of losing money rapidly due to leverage. 60.00% of retail investor accounts lose money when trading CFDs with Orbex Ltd. You should consider whether you understand how CFDs work and whether you can afford to take the high risk of losing your money.

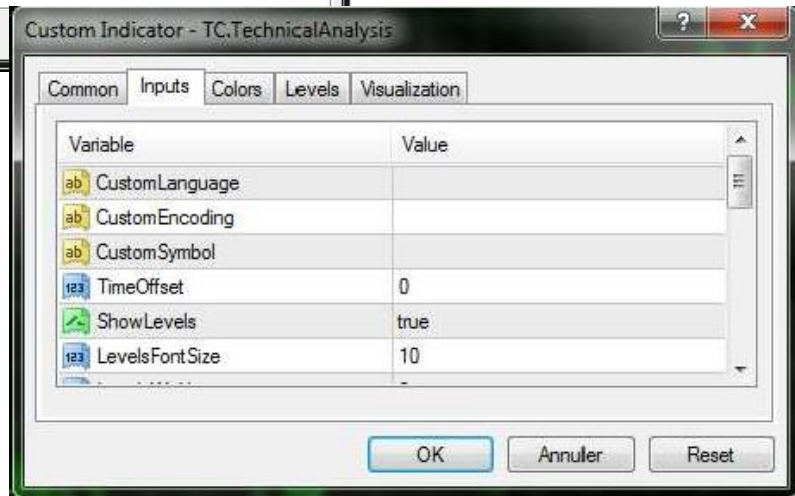
Drag and drop the Indicator to a chart and check Allow DLL imports option:



You can also enable this option once for all indicators and Expert Advisors: Go to Tools Options Expert Advisors. Check Allow DLL imports. Make sure to not check Confirm DLL function calls (if you don't want to manually confirm every function from libraries execution)

empty, select the inputs tab.

Here, you can set any parameters you wish to personalize the TC.TechnicalAnalysis Indicator.



License: Orbex Limited (HE 258884) is a fully licensed and regulated Cyprus Investment Firm (CIF) governed and supervised by Cyprus Securities and Exchange Commission (CySEC) (License Number 124/10).

Risk Warning: Trading foreign exchange on margin carries a high level of risk and may not be suitable for all investors. Before deciding to trade foreign exchange, you should carefully consider your investment objectives, level of experience, and risk appetite. There is a possibility that you may sustain a loss of some or all of your investment and therefore you should not invest money that you cannot afford to lose. You should be aware of all the risks associated with foreign exchange trading and seek advice from an independent financial advisor if you have any doubts.

CFDs are complex instruments and come with a high risk of losing money rapidly due to leverage. 60.00% of retail investor accounts lose money when trading CFDs with Orbex Ltd. You should consider whether you understand how CFDs work and whether you can afford to take the high risk of losing your money.

You have the possibility to choose one of 25 languages provided by Trading Central by specifying the necessary code in the "CustomLanguage" parameter (see Features and Parameters). Leave the CustomLanguage parameter empty if you want the Indicator to use the MetaTrader interface language you use currently.

If you would like to see our analyses in Portuguese, Romanian, Malay or Thai (languages which are not available in MetaTrader interface), just put the corresponding code (PT, RO, MS, TH) into the CustomLanguage field.

Whatever language you want to use, you need to have the correct setting in your system for non-unicode programs (see the Regional and Language Options in the control panel).

Features and parameters

Features	Default settings	Customizable (parameter name)
Attach TC levels to a chart: - pivot (invalidation) - supports (S1,S2,S3) - resistances (R1,R2,R3)	Display: true Font size: 10 Line width: 2 Color: resistances – green supports – red pivot – blue	✓ (ShowLevels) ✓ (LevelsFontSize) ✓ (LevelsWidth) ✓ (LevelsResistanceColor) (LevelsSupportColor) (LevelsPivotColor)
Display a technical analysis for the selected periodicity	Display: true Font size: 10 Font color: Yellow Font: Verdana	✓ (ShowStory) ✓ (StoryFontSize) ✓ (StoryTextColor) ✓ (StoryCustomFont)

License: Orbex Limited (HE 258884) is a fully licensed and regulated Cyprus Investment Firm (CIF) governed and supervised by Cyprus Securities and Exchange Commission (CySEC) (License Number 124/10).

Risk Warning: Trading foreign exchange on margin carries a high level of risk and may not be suitable for all investors. Before deciding to trade foreign exchange, you should carefully consider your investment objectives, level of experience, and risk appetite. There is a possibility that you may sustain a loss of some or all of your investment and therefore you should not invest money that you cannot afford to lose. You should be aware of all the risks associated with foreign exchange trading and seek advice from an independent financial advisor if you have any doubts.

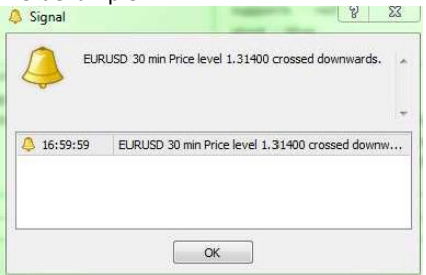
CFDs are complex instruments and come with a high risk of losing money rapidly due to leverage. 60.00% of retail investor accounts lose money when trading CFDs with Orbex Ltd. You should consider whether you understand how CFDs work and whether you can afford to take the high risk of losing your money.

<p>Possibility to change the language of the technical analysis</p>	<p>The language of your MetaTrader interface (retrieved automatically).</p> <p>If you use the language, which is not covered by our analyses, then the English version will be loaded.</p> <p>The condition for the correct displaying of non-unicode languages: you have to choose the corresponding language setting for non-Unicode programs (see the Regional and Language Options in the control panel)</p>	<p>✓ (CustomEncoding). <i>Normally there is no need to set encoding manually, but we leave this parameter to be customizable</i></p> <p>✓ (CustomLanguage) Possible values (you have to put a code only):</p> <table border="0"> <thead> <tr> <th>code</th> <th>language</th> </tr> </thead> <tbody> <tr><td>EN</td><td>ENGLISH</td></tr> <tr><td>FR</td><td>FRENCH</td></tr> <tr><td>DE</td><td>GERMAN</td></tr> <tr><td>ES</td><td>SPANISH</td></tr> <tr><td>IT</td><td>ITALIAN</td></tr> <tr><td>NL</td><td>DUTCH</td></tr> <tr><td>RU</td><td>RUSSIAN</td></tr> <tr><td>ZH_CN</td><td>SIMPLIFIED CHINESE</td></tr> <tr><td>JA</td><td>JAPANESE</td></tr> <tr><td>AR</td><td>ARABIC</td></tr> <tr><td>PT</td><td>PORTUGUESE</td></tr> <tr><td>TR</td><td>TURKISH</td></tr> <tr><td>RO</td><td>ROMANIAN</td></tr> <tr><td>ZH_TW</td><td>TRADITIONAL</td></tr> </tbody> </table>	code	language	EN	ENGLISH	FR	FRENCH	DE	GERMAN	ES	SPANISH	IT	ITALIAN	NL	DUTCH	RU	RUSSIAN	ZH_CN	SIMPLIFIED CHINESE	JA	JAPANESE	AR	ARABIC	PT	PORTUGUESE	TR	TURKISH	RO	ROMANIAN	ZH_TW	TRADITIONAL
code	language																															
EN	ENGLISH																															
FR	FRENCH																															
DE	GERMAN																															
ES	SPANISH																															
IT	ITALIAN																															
NL	DUTCH																															
RU	RUSSIAN																															
ZH_CN	SIMPLIFIED CHINESE																															
JA	JAPANESE																															
AR	ARABIC																															
PT	PORTUGUESE																															
TR	TURKISH																															
RO	ROMANIAN																															
ZH_TW	TRADITIONAL																															

License: Orbex Limited (HE 258884) is a fully licensed and regulated Cyprus Investment Firm (CIF) governed and supervised by Cyprus Securities and Exchange Commission (CySEC) (License Number 124/10).

Risk Warning: Trading foreign exchange on margin carries a high level of risk and may not be suitable for all investors. Before deciding to trade foreign exchange, you should carefully consider your investment objectives, level of experience, and risk appetite. There is a possibility that you may sustain a loss of some or all of your investment and therefore you should not invest money that you cannot afford to lose. You should be aware of all the risks associated with foreign exchange trading and seek advice from an independent financial advisor if you have any doubts.

CFDs are complex instruments and come with a high risk of losing money rapidly due to leverage. 60.00% of retail investor accounts lose money when trading CFDs with Orbex Ltd. You should consider whether you understand how CFDs work and whether you can afford to take the high risk of losing your money.

		CHINESE PL POLISH HE HEBREW KO KOREAN ID INDONESIAN MS MALAY TH THAI SV SWEDISH PT_BR BRASILIAN CZ CZECH SK SLOVAK HU HUNGARIAN
Our opinion on selected period (at the top right corner)	Display: true Font size: 14 Font color for RISE opinion: green Font color for DECLINE opinion: red	✓ (ShowPreference) ✓ (PreferenceFontSize) (PreferenceRiseColor) (PreferenceDeclineColor)
The legend explaining the meaning of our levels	Display: true Font size: 10	✓ (ShowLegend) ✓ (LegendFontSize)
Alerts on horizontal levels (when one of our levels is crossed upwards or downwards by the price level)	Enabled: true Alert example: 	✓ (EnableAlerts)
Our levels and comment are adjustable to the selected period		INTRADAY analysis is shown when you choose M1, M5, M15, M30, H1 or H4 periods SHORT TERM analysis corresponds to D1 period MEDIUM TERM is used for W1 and MN (sometimes also for D1 when SHORT TERM analysis is not available)

License: Orbex Limited (HE 258884) is a fully licensed and regulated Cyprus Investment Firm (CIF) governed and supervised by Cyprus Securities and Exchange Commission (CySEC) (License Number 124/10).

Risk Warning: Trading foreign exchange on margin carries a high level of risk and may not be suitable for all investors. Before deciding to trade foreign exchange, you should carefully consider your investment objectives, level of experience, and risk appetite. There is a possibility that you may sustain a loss of some or all of your investment and therefore you should not invest money that you cannot afford to lose. You should be aware of all the risks associated with foreign exchange trading and seek advice from an independent financial advisor if you have any doubts.

CFDs are complex instruments and come with a high risk of losing money rapidly due to leverage. 60.00% of retail investor accounts lose money when trading CFDs with Orbex Ltd. You should consider whether you understand how CFDs work and whether you can afford to take the high risk of losing your money.

Trading Central Indicator for MetaTrader4

TRADER / USER SET UP & CONFIGURATION

<p>Possibility to manually set the product to analyze</p>	<p>Automatically retrieved by the Indicator (when you apply it to a chart)</p>	<p>✓ (CustomSymbol) <i>Normally there is no need to set it manually, because we have all product codes used by brokers and this code is retrieved automatically from your chart. But, if the matching is not correct, you can type yourself here the correct symbol.</i></p>
---	--	--

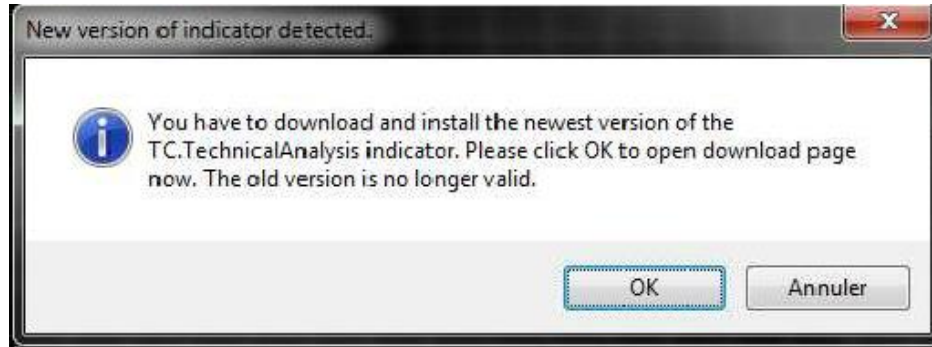
License: Orbex Limited (HE 258884) is a fully licensed and regulated Cyprus Investment Firm (CIF) governed and supervised by Cyprus Securities and Exchange Commission (CySEC) (License Number 124/10).

Risk Warning: Trading foreign exchange on margin carries a high level of risk and may not be suitable for all investors. Before deciding to trade foreign exchange, you should carefully consider your investment objectives, level of experience, and risk appetite. There is a possibility that you may sustain a loss of some or all of your investment and therefore you should not invest money that you cannot afford to lose. You should be aware of all the risks associated with foreign exchange trading and seek advice from an independent financial advisor if you have any doubts.

CFDs are complex instruments and come with a high risk of losing money rapidly due to leverage. 60.00% of retail investor accounts lose money when trading CFDs with Orbex Ltd. You should consider whether you understand how CFDs work and whether you can afford to take the high risk of losing your money.

Upgrade process

When a new version of the Indicator is available, a user gets a notification inside their MetaTrader and the loading starts automatically after clicking the OK button.



The previous version is no longer valid.

License: Orbex Limited (HE 258884) is a fully licensed and regulated Cyprus Investment Firm (CIF) governed and supervised by Cyprus Securities and Exchange Commission (CySEC) (License Number 124/10).

Risk Warning: Trading foreign exchange on margin carries a high level of risk and may not be suitable for all investors. Before deciding to trade foreign exchange, you should carefully consider your investment objectives, level of experience, and risk appetite. There is a possibility that you may sustain a loss of some or all of your investment and therefore you should not invest money that you cannot afford to lose. You should be aware of all the risks associated with foreign exchange trading and seek advice from an independent financial advisor if you have any doubts.

CFDs are complex instruments and come with a high risk of losing money rapidly due to leverage. 60.00% of retail investor accounts lose money when trading CFDs with Orbex Ltd. You should consider whether you understand how CFDs work and whether you can afford to take the high risk of losing your money.